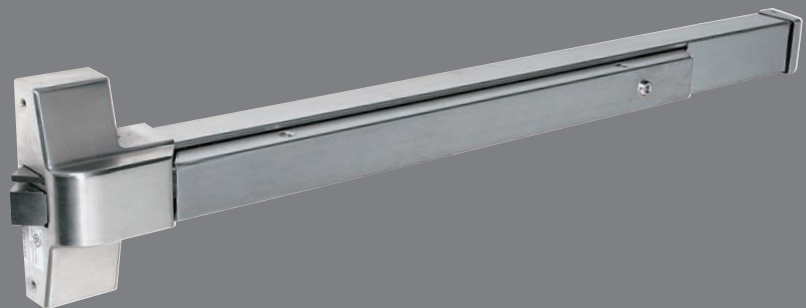
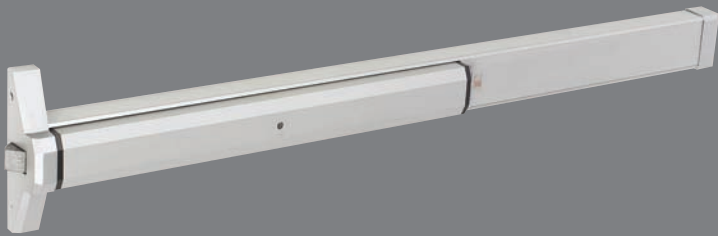


EXIT DEVICES



NARROW STILE

TH1100-ED



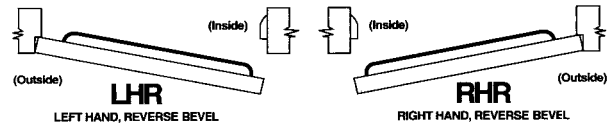
Specifications

- MATERIAL: Contoured anodized aluminum cross bar, stainless steel springs
- LATCH CASE: 1 1/4" wide x 7 1/4" long with 1/2" stainless throw
- BACKSET: 1 5/32" from edge of door to center line of device
- STRIKE: Rim mounted roller strike with shim
- PROJECTION: 4 3/4"
- STILE: 1 7/8" minimum
- HANDING: Handed, please specify RH or LH
- DOOR THICKNESS: 1 3/4" standard
- DOOR WIDTH: Up to 42", it can be field sized
- MOUNTING HEIGHT: Recommended installation at 39 13/32" from floor to center line of latch or strike assemblies
- FASTENERS: Furnished with sheet metal, machine screws and shoulder mounting studs with set screws
- CYLINDER: Accepts rim cylinder only
- DOGGING: Inside - push up dog pin rotate with screwdriver, Outside - by key cylinder
- FINISHES: Aluminum and Durotonic

Global Series TH1100-ED "crash bar" style exit devices are suitable for narrow, medium or wide stile aluminum and hollow metal doors. It is handed with a contoured cross bar that will fit doors up to 42" wide and can be field sized to accommodate narrow doors.

Grade - ANSI A156.3 Grade 2

Warranty - 10 years



*For Left Hand Reverse Door; order RH device

*For Right Hand Reverse Door; order LH device

Exit Device Trims*



*For exit only application and outside control by rim cylinder

*For new door application or existing hole less than 1 3/16"

CONCEALED VERTICAL ROD

TH1100-CVR



Specifications

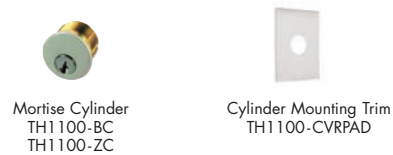
- MATERIAL: Contoured anodized aluminum cross bar, stainless steel springs
- LATCH CASE: 1 1/4" wide x 7 1/4" long
- DOOR HEIGHT: 7' standard
- BACKSET: Center template on narrow door stile
- STRIKE: Top - flat mortise, Bottom - flat mortise or directly through threshold
- PROJECTION: 4 3/4"
- STILE: 1 7/8" minimum
- HANDING: Reversible, non-handed
- DOOR THICKNESS: 1 3/4" standard
- DOOR WIDTH: Up to 42"
- MOUNTING HEIGHT: 35 11/16" from floor to center line of the bottom latch case mounting stud
- FASTENERS: Furnished with sheet metal, machine screws and shoulder mounting studs with set screws
- CYLINDER: Accepts mortise type
- DOGGING: Inside - push up dog pin and rotate with screwdriver, Outside - by key cylinder
- FINISHES: Aluminum and Durotonic

Global Series TH1100-CVR panic devices blend the utility of a vertical rod application with the appearance of a traditional panic device. It is non-handed and reversible with a contoured cross bar that will fit doors up to 42" wide and can be field sized to accommodate narrow doors.

Grade - ANSI A156.3 Grade 2

Warranty - 10 years

Exit Device Trims*



*For exterior key application must order TH1100-CVRPAD. Insert mortise cylinder in mounting trim and secure with locking ring nut, included.

Additional Accessories



Manual Surface Bolt
TH1100-SB1-US26D

NARROW STILE PANIC EXIT DEVICES

RIM TYPE

TH1100-STED

Specifications

- NARROW STILE
- CYLINDER: Includes Rim Cylinder
- Underwriters' Laboratories Inc. Listed - Panic Hardware
- Requires a 2" mounting surface for typical use with narrow, medium and wide stile aluminum doors, hollow metal or wood doors.
- HANDING: Non-handed, for LH or RH doors.
- Latch bolt throw 5/8"
- DOGGING: Dogging by Hex key in touch bar.
- Outside unlatching with standard rim cylinder
- DOOR WIDTH: Standard units for 36" and 48" door widths (can be field sized)
- Can be used on 30" wide doors.
- FINISHES: Aluminum and Durotonic

Global Series TH1100-STED Narrow Stile "Rim Type" style exit devices are suitable for all doors (aluminum, hollow metal, or wood) where there is no projection on the face. Manufactured of extruded anodized aluminum, the TH1100-STED is durable enough for the most demanding applications. A rim cylinder is included.

Grade - ANSI A156.3 Grade 2

Warranty - 10 years

Exit Device Trims



Rim cylinder
TH1100-RC



Pull Handle
TH1100-STED-PULL-AL
TH1100-STED-PULL-DU

CONCEALED VERTICAL ROD

TH1100-STEDCVR

Specifications

- NARROW STILE
- CYLINDER: Includes Mortise Cylinder and Cylinder Mounting Pad with Locking Ring
- Underwriters' Laboratories Inc. Listed - Panic Hardware
- For use with narrow, medium and wide stile Aluminum doors.
- HANDING: Non-handed, Field reversible for LH or RH doors.
- DOGGING: Outside unlatching and dogging by cylinder key or dogging by Hex key in touch bar.
- Top steel toggle latch and bottom steel rod latch bolt
- Unit uses standard mortise cylinder with MS type cam and TH1100-BC cylinder
- Mounting pad
- DOOR WIDTH: Standard units for 36" and 48" door widths (can be field sized) and up to 84" in height.
- Can be used on 30" wide doors.
- FINISHES: Aluminum and Durotonic

Global Series TH1100-STEDCVR Narrow Stile "Concealed Vertical Rod" style exit devices are suitable for all doors (aluminum, hollow metal, or wood) where there is no projection on the face. Manufactured of extruded anodized aluminum, the TH1100-STEDCVR is durable enough for the most demanding applications. A Mortise cylinder and a cylinder mounting pad with locking ring is included.

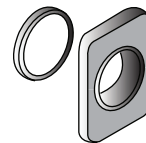
Grade - ANSI A156.3 Grade 2

Warranty - 10 years

Exit Device Trims



Mortise Cylinder
TH1100-BC



Cylinder
Mounting Pad
w/ Locking Ring



Pull Handle
TH1100-STED-PULL-AL
TH1100-STED-PULL-DU

TOUCH BAR

TH1100EDTBAR



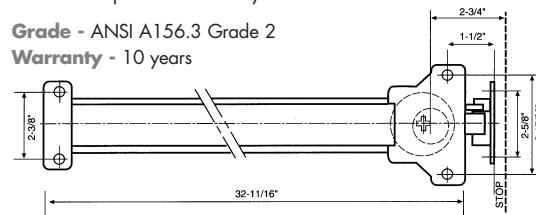
Specifications

- MATERIAL: Extruded anodized aluminum push bar, stainless steel springs
- LATCH: Stainless Steel, 3/4" throw - 5/8" deadlatch
- BACKSET: 2 3/4" Covers 161 prep, includes latch & strike filler plates
- STRIKE: Surface mounted for 5/8" stop with shim
- PROJECTION: 2 1/2" - 1 7/8" dogged
- STILE: 4 1/4" minimum
- HANDING: Reversible, non-handed
- DOOR THICKNESS: 1 3/4" standard
- DOOR WIDTH: 36", can be field sized to 30" (48" available)
- MOUNTING HEIGHT: Recommended installation at 41" from finished floor to center line of push rail
- FASTENERS: Furnished with sheet metal and machine screws
- CYLINDER: Accepts all key trims cylinder
- DOGGING: 1/2 turn hex key
- FIRE RATED: Available - please specify 🔥
- FINISHES: Aluminum, Duronotic, and Stainless Steel

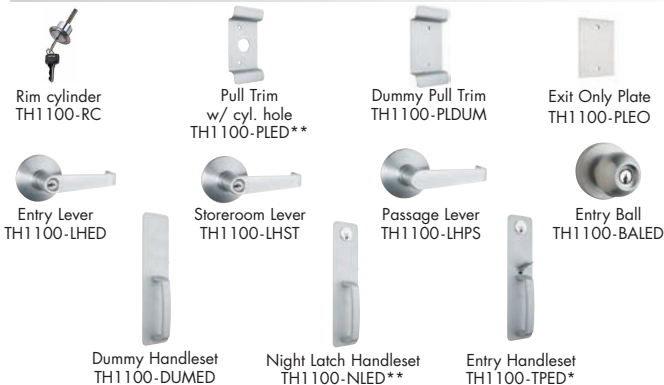
Global Series TH1100EDTBAR "touch bar" style exit devices are suitable for all doors (aluminum, hollow metal, or wood) where there is no projection on the face. Manufactured of extruded anodized aluminum, the TH1100EDTBAR is durable enough for the most demanding applications. A rim cylinder is not included, and the EDTBAR can also be used in conjunction with any of the exit device trims listed below.

Grade - ANSI A156.3 Grade 2

Warranty - 10 years

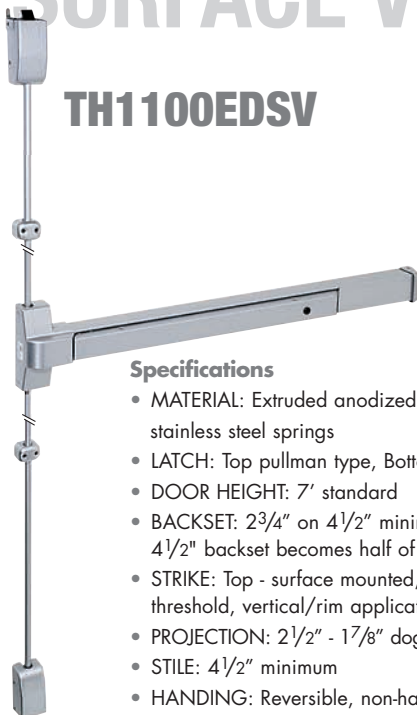


Exit Device Trims



SURFACE VERTICAL ROD

TH1100EDSV



Specifications

- MATERIAL: Extruded anodized aluminum push bar, stainless steel springs
- LATCH: Top pullman type, Bottom bolt assembly
- DOOR HEIGHT: 7' standard
- BACKSET: 2 3/4" on 4 1/2" minimum stile width - if less than 4 1/2" backset becomes half of the exposed stile width
- STRIKE: Top - surface mounted, Bottom - flat mortise or into threshold, vertical/rim application use DBLST double dr. strike
- PROJECTION: 2 1/2" - 1 7/8" dogged
- STILE: 4 1/2" minimum
- HANDING: Reversible, non-handed
- DOOR THICKNESS: 1 3/4" standard
- DOOR WIDTH: 36", can be field sized to 30"
- MOUNTING HEIGHT: Recommended installation at 41" from finished floor to center line of push rail.
- FASTENERS: Furnished with sheet metal and machine screws
- CYLINDER: Accepts rim, all trims Schlage "C" keyway
- DOGGING: 1/2 turn hex key
- FIRE RATED: Available - please specify 🔥
- FINISHES: Aluminum and Stainless Steel

Global Series TH1100EDSV Surface Vertical Rod panic device is the perfect choice for double doors without mullions. Reversible for right or left hand doors, they are ideal for new construction or renovations. Our EDSV panics can be used in conjunction with any of our exit device trims listed below.

Grade - ANSI A156.3 Grade 2

Warranty - 10 years

Exit Device Trims



*TH1100-TPED entry trim accepts mortise cylinder, included

**To install cylinder on trim plate for 2 1/8" hole use mounting sleeve